



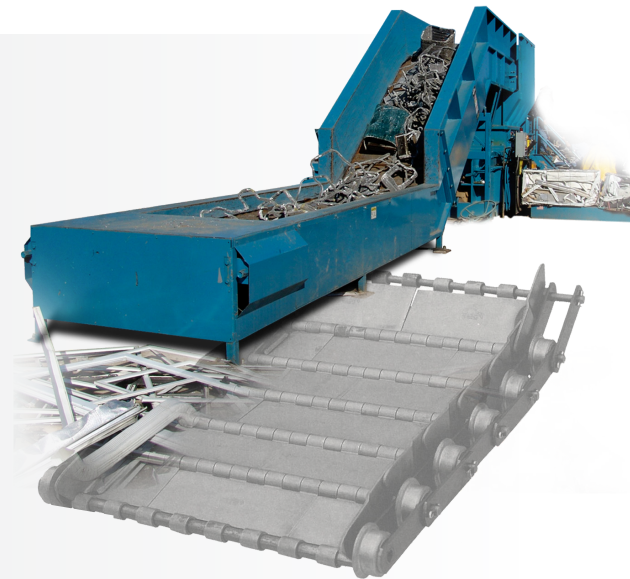
EZ-TRAX™ Conveyor Systems

Marathon offers custom-engineered conveying systems to handle a wide variety of bulky materials and scrap-handling applications. These range from light-duty sliderbeds to heavy-duty steelbelt conveyors and complete turn-key Material Recovery Facility (MRF) systems.

EZ-Trax Conveyors

Conveyor Types and Applications

- Combination belt conveyors**
 Heavy-duty conveyors that feature a chain drive system incorporated with a rubber belt for medium- to high-volume applications ranging from 5 to 30 tons per hour.
- Sliderbed conveyors**
 Friction-driven conveyors with a belt supporting bed for low- to medium-volume bulk material handling applications. These conveyors can be used for baler and compactor feeds, sorting lines, and components of a MRF system.
- Hinge steelbelt conveyors**
 Ideal for medium- to heavy-duty applications such as precrusher or compactor feeds, paper, solid waste, large scrap baler feeds, and mixed waste lines.
- Apron conveyors**
 For the most demanding, high-impact, heavy-duty operations such as transfer stations, scrap, MSW and C&D lines, mixed waste lines, and abrasive materials.
- Trough conveyors**
 Designed to convey material at a higher speed. The rubber belt rides on angled rollers or idlers that form a trough. Used for light- to medium-duty balers, compactors, and shredder feeds.



EZ-TRAX Conveyors fit many applications, such as this MRF in Lakeville, MA. It features dozens of sliderbed conveyors, sorting lines, sorting bins, platforms, and baler feed combination steelbelt conveyors.



This smaller MRF, located in Bedford County, VA, has a sliderbed sorting line conveyor fed by a combination chainbelt conveyor.



EZ-TRAX sliderbed and steelbelt conveyors are ideal add-ons for baler and compactor feed applications. They add efficiency to optimize productivity and throughput capacity. This below-ground sliderbed is feeding a Gemini 3560 manual-tie, horizontal baler.



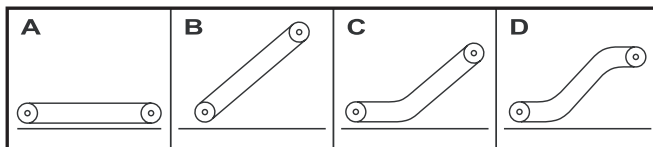
**Environmental
Solutions Group**

A DOVER COMPANY

EZ-TRAX™ Conveyor Systems

| Standard Models | Available Pitch | Available Belt Widths | Configs. |
|-------------------------|-------------------------------------------------|----------------------------------------------------------------|------------|
| Combination Belt | 4" (10cm), 6" (15cm), 9" (23cm) | 18–48" (91–122cm), 36–72" (91–183cm), 36–84" (122–213cm) | A, B, C, D |
| Hinge Steelbelt | 4" (10cm), 6" (15cm), 9" (23cm) | 18–48" (91–122cm), 36–72" (91–183cm), 36–84" (122–213cm) | A, B, C, D |
| Apron | 6" (15cm), 9" (23cm) | 36–72" (91–183cm), 48–84" (122–213cm) | A, B, C, D |
| Standard Models | Belt Weights | Available Belt Widths | Configs. |
| Sliderbed | 150lb (68kg), 200lb (91kg), 220lb (136kg) | 24–72" (61–183cm) | A, B |
| Trough | 220lb (100kg), 230lb (104kg) | 24–60" (61–152cm) | A, B |

CONFIGURATIONS



| Combination Belt | |
|---------------------|-------------------------------|
| Inclines | 30 and 35 degrees |
| Cleats | Variable |
| Nose Overs | Horizontal or 10 degrees down |
| Position | Above and Below Ground |
| Hinge Steelbelt | |
| Inclines | 30 and 35 degrees |
| Cleats | Variable |
| Nose Overs | Horizontal or 10 degrees down |
| Position | Above and Below Ground |
| Apron | |
| Inclines | 30 and 35 degrees |
| Nose Overs | Horizontal or 10 degrees down |
| Position | Above and Below Ground |
| Sliderbed | |
| Belt Weights | 150 / 200 / 220 lbs. |
| Belt Widths | Up to 72 in. |
| Inclines | Up to 35 degrees |
| Cleats | Variable |
| Position | Above and Below Ground |
| Trough | |
| Belt Weights | 220 / 230 lbs. |
| Belt Widths | 24 in.-60 in. |
| Troughs | Up to 30 degrees |
| Speed | Variable |

Rental and Leasing Programs Available

For detailed specifications, recommendations, or free economic studies comparing various systems, contact Marathon Customer Care at **1-800-633-8974**.

Authorized Dealer:



Marathon Equipment Company
P.O. Box 1798
Vernon, AL 35592-1798
800.633.8974
www.marathonequipment.com
NJPA Contract #060612-ESG



Environmental Solutions Group
A DOVER COMPANY

www.doveresg.com



Pictures in this literature are illustrative only. Specifications are subject to change without notice in order to accommodate improvements to the equipment. Complies with ANSI standard Z245.5 and applicable OSHA Regulations. Products must be used with safe practice and in accordance with said regulations and standards.