

Clean-Pak™ Series Self-Contained Compactor



Clean-Pak Protects ... Your Bottom Line!

Protects components and personnel from contact with waste stream

- Helps extend component life
- Improves safety for service technicians

Self cleaning pivoting design helps eliminate material from behind ram

- Reduces downtime due to cleaning
- Helps lower maintenance and cleanout cost

Protects the environment

- Hydraulic spill reservoir contains hazardous oil leaks
- Helps minimize spill response clean-up costs

Supermarkets



Restaurants



Hospitals



Malls



Food Processing



Ideal for food, medical, and other waste applications

Ordinary Compactors

(waste builds up behind ram)



Clean-Pak

(no waste behind ram)



**Components exposed to waste
equal damage and premature wear**



**Components protected from waste
stream, helping extend life**

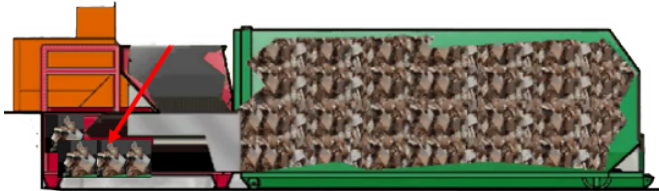


Value Added Standard Features	Wastequip	Competitor A	Competitor B
Self-Cleaning Pivoting Ram	✓		
Hydraulic Cylinders Shielded from Waste	✓		
Automatic Alert for Preventative Maintenance	✓		
Powered by Guardian Control System	✓		
NEMA 4 Rated Control Panel	✓	✓	
Low Temperature Oil	✓		✓
User Friendly 24 Volt Push Button Controls	✓	✓	
Internal Hydraulic Spill Reservoir	✓		
"Watch Dog" Timer Prevents Motor Burnout	✓		
Built-in Drain for easy clean out	✓		✓
Internal Hydraulic Spill Reservoir	✓		
Multi-Cycle Timer	✓	✓	✓
5yr Structural, 2yr Parts, 1yr Labor Warranty	✓		

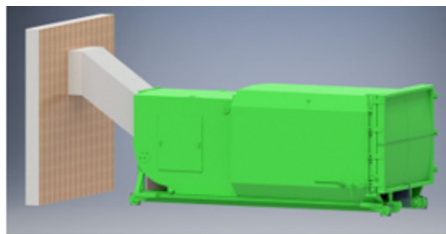
Clean-Pak™ Series Self-Contained Compactor



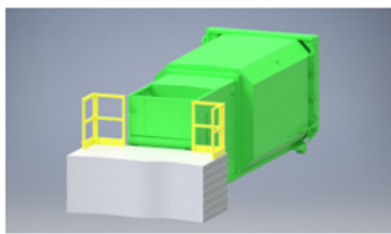
**Traditional compactor
with waste building up
behind ram**



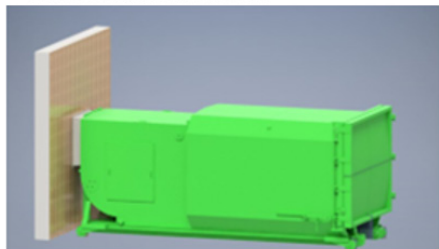
Available in Ground, Dock or Chute fed Applications



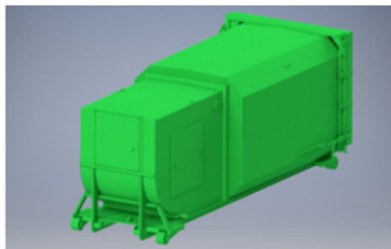
Chute fed, elevated floor



Dock fed



Chute fed, ground level



Ground fed

Clean-Pak™ Compactor Specifications

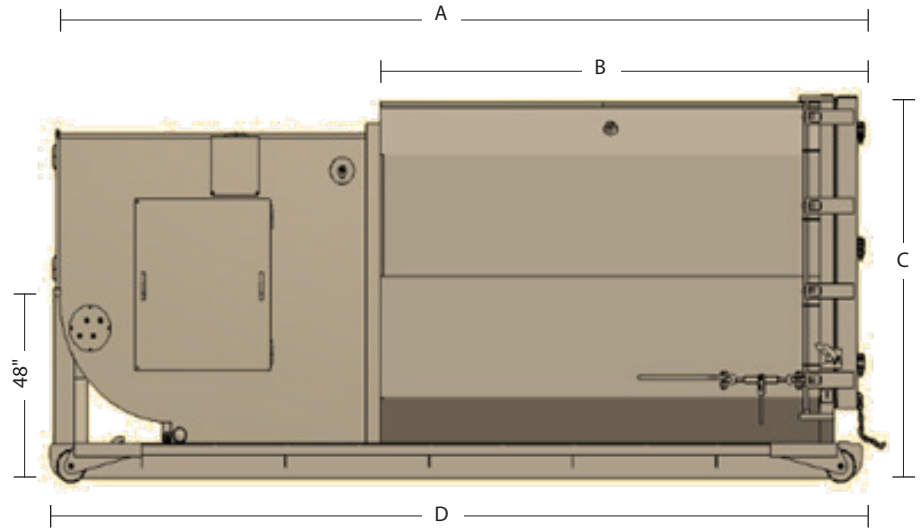
FEATURES

STANDARD

- Guardian Control System
- Automatic Maintenance Scheduler (AMS)
- NEMA 4 enclosure
- Controls in panel face
- 5-year structural warranty
- 38-second cycle time
- Full container light
- Low temperature oil
- Multi-cycle timer
- Operational and service manual
- Primed and painted in several colors

OPTIONS

- Advance warning light
- Pressure gauge - color coded
- Controls on remote pendant in lieu of mounting in panel face
- Guide rails with stops
- Oil heater
- Photo electric eye
- Odor control system
- Container lifter



Models	CP model (cu. yds.)	Overall length (A) (in.)	Container length (B) (in.)	Overall height (C) (in.)	Floor length (D) (in.)*	Width (in.)	Weight (lbs.)
	20	208	110	100	207	102	8,550
	25	238	140		237		8,900

SPECIFICATIONS

Charge Box

- Wastequip rating - 1.5 cubic yards
- Wastec rating - 1.0 cubic yards
- Clear top opening - 36" Length x 39" Width

Ram

- 3/16" Domex steel with engineered structural reinforcements

Compactor Head

- Floor - 3/16" Domex steel 6" x 2" x 1/4" tube supports
- Sides - 3/16" steel plates with formed steel supports
- Sump - 12" height
- Side access panels, 12 ga, removable
- Pivotal wear UHMW collars

Electrical

- Electric motor - 10 hp TEFC (Totally Enclosed Fan Cooled)
- Voltage - 208/230/460, 3 phase, 60 HZ (optional 575V)
- Power box - NEMA 4 rated, UL listed
- Automated cycle operation - push start button - ram extends, retracts and stops automatically

Hydraulic Specifications

- Pump - 9.4 gpm
- Ram penetration - 3"
- Cycle time - 38 seconds
- Hydraulic cylinder - (2), cylinder bore - 3.5"
- Cylinder rod - 2.0"
- Hydraulic oil tank - 25 gallon reservoir
- Power unit location - remote

Hydraulic Performance

Ram face pressure

- Normal - 27,500 lbs
- Maximum - 30,400 lbs

Ram psi Face Pressure

- Normal - 21.75 psi
- Maximum - 24.11 psi

Operating pressure

- Normal - 1,850 psi
- Maximum - 2,050 psi

Container

- 7 gauge floor with 3" channel crossmember
- 6" x 2" x 1/4" tube rails, 36-1/2" I.D. between rails
- Solid steel bullnose and hook at both ends
- 4" diameter rollers, 4-1/2" long
- Length, Width and Height - see chart above

Standard Color Choices*



Colors shown are as accurate as printing allows. The actual color is subject to variation from the printed color sample. Color choices vary by plant location. Please contact your local sales representative for available colors. Custom colors are available upon request and are subject to an additional charge.



Tel: 877.468.9278 | sales@wastequip.com | www.wastequip.com

Wastequip is the leading North American manufacturer of waste and recycling equipment for collecting, processing and transporting recyclables and solid or liquid waste. April 2017 © Wastequip, all rights reserved. Specifications subject to improvement without notice. Equipment displayed should be operated by properly trained personnel. Operators should become familiar with OSHA, ANSI and any other applicable standards or laws for using this equipment. Improper use, misuse, or lack of maintenance could cause injury to people and/or property. Photos used in the literature are illustrative only. We assume no liability or responsibility for proper training/operation of equipment not manufactured by Wastequip. We reserve the right to make changes at any time without notice. Information contained within this literature is intended to be the most accurate available at time of printing.