

# Heavy-Duty Vertical Balers



*Easy to use*

*Maintenance  
friendly*

*Bale weights  
up to 1,300 lbs.*

*Side-mounted  
hydraulic  
power unit*



**RAMJET**   
Stationary and self-contained compactors.



**Environmental  
Solutions Group**

A DOVER COMPANY

*Shopping Plazas*

*Hospitals*

*Supermarkets*

*Hotels/Motels*

*Schools*

*Paper Converters*

*Paper Stock Dealers*

*MRFs/Recycling Centers*

*Retailers*

*Distribution Centers*

*Manufacturing Plants*

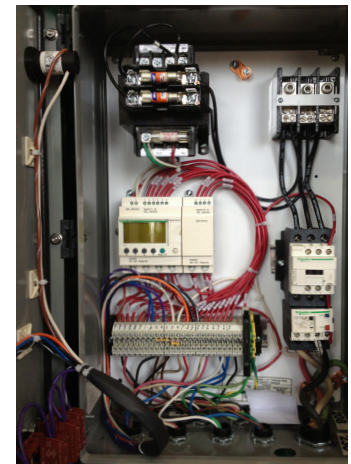
## High-Density Vertical Balers

### Easy to Use and Maintenance-Friendly

Marathon's Vertical Balers feature many innovations for ease of use and maintenance-friendly access. Features such as the side-mounted power unit, front facing panel box, and redundant feed gate interlock system, all add up to a reliable baler for years of trouble-free recycling.

Your baler can also be equipped with optional features that add even more efficiency and ease of use. An automatic bale ejector that activates when the bale door is opened is available. The ejector does not extend beyond the wire guides, enabling the unit to be placed against the wall. Wire guides eliminate the need to go behind the baler for a complete front tie-off system. The optional Bale-Made light illuminates when a bale is made to notify the operator when it is time to eject the bale, and a lockable electrical disconnect can be added for local Lock-Out/Tag-Out.

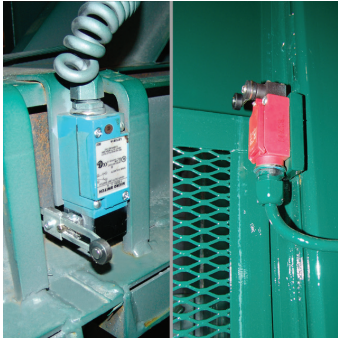
Fixed retainer teeth on the door and rear of the baler reduce material springback.



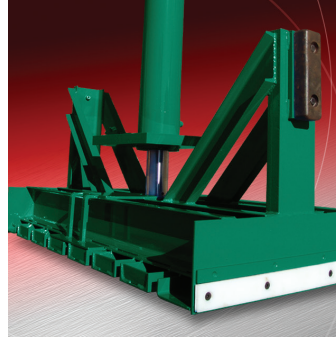
Front opening control panel eliminates the need for 48" side clearance as required by NEC® standards.



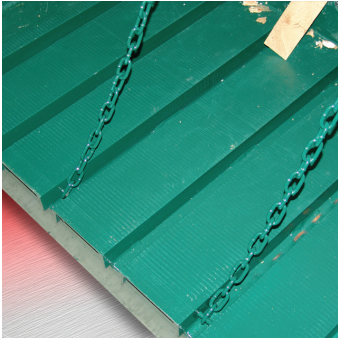
# HEAVY-DUTY INDUSTRIAL BALERS



A redundant interlock system is incorporated into the feed gate switch.



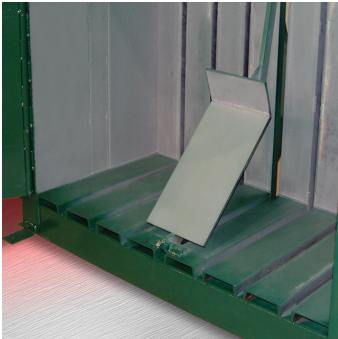
Platen features replaceable high-density polyethylene guides to absorb side thrust and replaceable cast iron shoes.



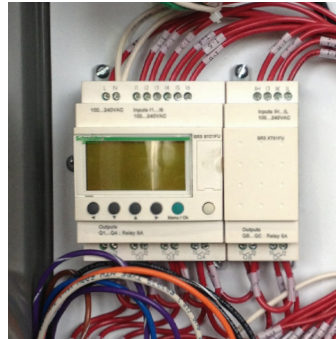
The standard chain bale ejector is manually set after the bale door is opened.



Standard controls: key lock On/Off Auto Cycle, Emergency Stop, and Platen Raise/Lower. A Baler Ready light indicates the baler is operational. Also available with "Bale Made" light and electrical disconnect (shown).



An optional automatic bale ejector is also available. It is actuated when the bale door is opened.



If there is an attempt to override the interlocks; the panel box features a programmable "smart" relay control system that disables the baler. The relay add diagnostic and trouble-shooting capabilities.



An automatic feed gate opens at the end of each cycle as the platen is retracted.



The side-mounted, self-contained power unit is convenient for maintenance and servicing.

## Other Available Options:

- Bale Made Light
- Electrical Disconnect Switch
- Oil Heater
- Automatic Bale Ejector
- Single-Phase Power Unit
- Front Tie-Off System

## Available Options:

Wire Guides and Auto Eject



Bale Made Light

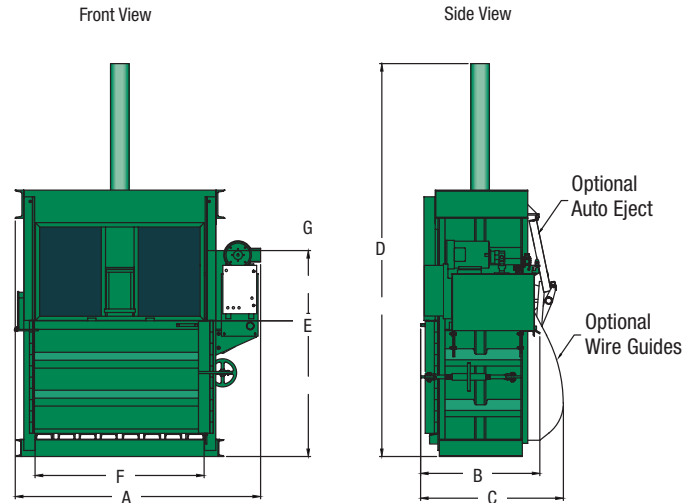


Lockable Disconnect



## V-6030 HD Vertical Baler

Performance	V-6030 HD
Cylinder (bore, rod, & stroke)	6" x 3.5" x 48" (152mm x 89mm x 1219mm)
Pump flow (gear pump)	10.5 gpm (39.7 lpm)
Motor	10 hp (1,750 rpm) (7.46 kW)
System pressure	2,000 psi (13790 kPa)
Maximum system pressure	2,200 psi (15168 kPa)
Maximum platen force	62,200 lbs. (277 kN)
Platen pressure	37 psi (255 kPa)
Cycle time	56 sec.
Electrical Equipment	
Electrical	208/230/460 3-phase
Electrical control voltage	120 VAC
<b>OFF/ON Security Key Switch; 3-Position Selector Switch; EMERGENCY STOP Button; IEC Motor Starter and Overload, Programmable Smart Relay UL® and CUL® listed</b>	
Bale Size Data	
Bale size	60"W x 30"D x 48"H (1524mm x 762mm x 1219mm)
Bale volume	50 cu.ft. (1.42 m <sup>3</sup> )
Bale weight (OCC)	Up to 1,100 lbs. (499 kg)
Number of bale ties (14 ga x 14' L)	5
Total baler weight	5,050 lbs. (2291 kg)
Structural	
Body side plates	7 Ga.
Body floor	7 Ga. floor plate, 6" (152mm) structural channel
Floor structure	6" (152mm) structural channel
Top cylinder supports	Heavy 8" (203mm) structural channel integrated into main frame of 10" (254mm) 6.5 structural channel and 1" x 12" (25mm x 305mm) plate beam with 1" (25mm) pinning plate
Platen face	1/4" (6mm) plate, 6" (152mm) structural channels and tubes
Bale door	7 ga. door plate, 4" x 3" (102mm x 76mm) structural tube top rail
Ejector	Manually engaged, chain type
Paint	Primer bottom coat; industrial grade top coat, low VOC, high solids



Dimensional Data:	V-6030 HD
<b>A - Overall Width</b>	87" (2210mm)
<b>B - Overall Depth</b>	41 1/2" (1054mm)
<b>C - Overall Depth (w/optional wire guides)</b>	54 1/2" (1384mm)
<b>D - Overall Height</b>	140" (3556mm)
<b>E - Feed Height</b>	48 1/4" (1226mm)
<b>F - Feed Opening Width</b>	60" (1524mm)
<b>G - Feed Opening Height</b>	25" (635mm)
<b>H - Bale Door Clearance</b>	58" (1473mm)

**RAMJET**  
Stationary and self-contained compactors.

Authorized Dealer:

**MARATHON**  
A DOWER COMPANY  
**Marathon Equipment Company**  
P.O. Box 1798  
Vernon, AL 35592-1798  
800.633.8974  
[www.marathonequipment.com](http://www.marathonequipment.com)

**Environmental Solutions Group**  
A DOWER COMPANY  
[www.doveresg.com](http://www.doveresg.com)



Pictures in this literature are illustrative only. Specifications are subject to change without notice in order to accommodate improvements to the equipment. Complies with ANSI standard Z245.2, all applicable OSHA Regulations, and certified under WASTEC's Stationary Compactor Certification Program. Products must be used with safe practice and in accordance with said regulations and standards.