



# Stealth<sup>®</sup> Manual-Tie Horizontal Baler

*Marathon's Stealth baler is specifically designed for baling OCC and similar material with proven productivity for the recycling market.*

## Stealth Horizontal Baler

### Standard Features

- 46-inch wide by 60-inch long feed opening
- "Hand feed" type hopper standard
- Hydraulic bale door release
- 1 to 2 tons per hour throughput
- Through door and side tie-off
- Start-up alarm
- Control panel equipped with electrical disconnect switch
- Bale made alarm

### Optional Features

- Photocell control
- Chute feed hopper
- In-feed conveyor
- Cart dumper



Marathon's Stealth Series balers feature a hydraulic door latch.



The optional chute feed hopper with inspection door and interlock switch will accommodate pneumatic, gravity, or conveyor feeding systems.



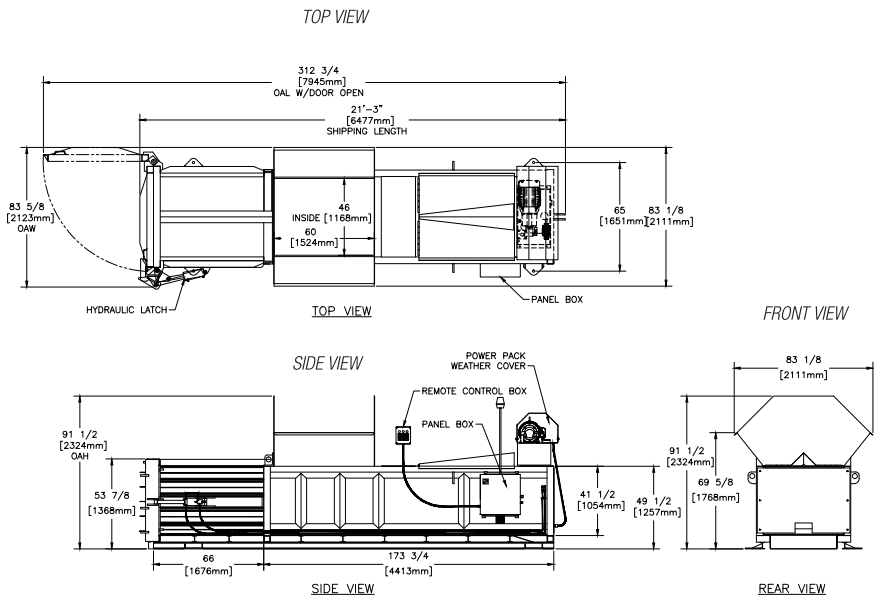
**Environmental Solutions Group**

A DOVER COMPANY

# Stealth® Manual-Tie Horizontal Baler

Specifications	Stealth
<b>Bale Size</b>	42 in. x 48 in. x 60 in. 1067mm x 1219mm x 1524mm
<b>Bale weight (OCC)</b>	Up to 1,500 lbs. 680 kg
<b>Throughput</b>	1-2 tons per hour 900-1800 kg per hour
<b>Performance</b>	
<b>Maximum System Pressure</b>	2,400 psi 165 bar
<b>Maximum Force</b>	67,900 lbf. 302 kN
<b>Ram Face Pressure</b>	43 psi 296.5 kPa
<b>Cycle Time</b>	50 sec.
<b>Weight (dry)</b>	12,600 lbs. 5715 kg
<b>Electrical Equipment</b>	
<b>Electrical Motor 460 - 3-phase</b>	20 hp 14.9 kW
<b>Electrical Control Voltage</b>	120 VAC
<b>UL® and CUL® listed</b>	
<b>Hydraulic Equipment</b>	
<b>Pump Type</b>	Gear
<b>Pump Flow</b>	18.5 gpm 70 L/min.
<b>Reservoir</b>	30 gal. 113.6 lit.
<b>Hydraulic Cylinder (Bore)</b>	6 in. 152mm
<b>Hydraulic Cylinder (Rod)</b>	4 in. 102mm
<b>Hydraulic Cylinder (Stroke)</b>	82 in. 2083mm

## Dimensions:



Dimensions	Length	Width	Height	Hopper Type	Feed Opening	Feed Height
<b>Stealth</b>	255 in. (6477mm)	83 5/8 in. (2123mm)	91 1/2 in. (2324mm)	Hand feed	46" L x 60" W 1168mm x 1524mm	69 5/8 in. 1766mm

## Rental and Leasing Programs Available

For detailed specifications, recommendations, or free economic studies comparing various systems, contact Marathon Customer Care at **1-800-633-8974**.

## Authorized Dealer:



**Marathon Equipment Company**  
 P.O. Box 1798  
 Vernon, AL 35592-1798  
 800.633.8974  
[www.marathonequipment.com](http://www.marathonequipment.com)  
 NJPA Contract #060612-ESG



**Environmental Solutions Group**  
 A DOVER COMPANY  
[www.doveresg.com](http://www.doveresg.com)



Pictures in this literature are illustrative only. Specifications are subject to change without notice in order to accommodate improvements to the equipment. Complies with ANSI standard Z245.5 and applicable OSHA Regulations. Products must be used with safe practice and in accordance with said regulations and standards.

