



MUNICIPAL EQUIPMENT, INC.

NEW WAY MAMMOTH 40 YD FRONT LOADER

Autocar ACX64 - VIN 249567



EQUIPMENT PROPOSAL

Call us: 800-248-7590

MunicipalEquipmentInc.com



EQUIPMENT



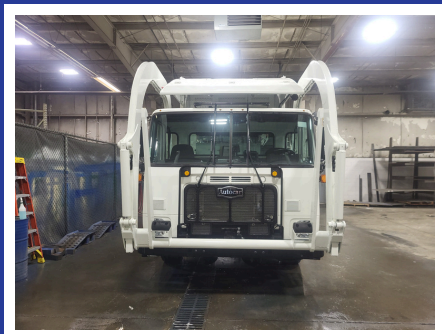
PARTS



MOBILE



SERVICE



- **40 yd Front Loader**
- **8K Forks**
- **Service Hoist**
- **Light Package**
- **Quad Camera System**
- **Tag Axle**

**Call today to
schedule a demo
or secure this
truck before it's gone!**

New Way 40 yd Mammoth Autocar ACX64 Chassis

The upgraded Mammoth front loader delivers greater productivity and durability with increased payload capacity, 20% more compaction force, and reinforced construction in all high-wear areas. With multiple customization options and operator-friendly features, it provides rugged, route-tested reliability tailored to your operation.

Body Specs

- New Way 40 yd Mammoth Front Loader
- 8K Arms; 1.5 in Fork 48 in useable
- Air Canopy
- Service Hoist
- Light Package
- Quad Camera System - Rear, Bulkhead Facing Hopper, Hopper, Blindspot
- Vane Pump
- Joystick Controls

Chassis Specs

- Autocar ACX64 - VIN 249567
- X12 350 HP Engine
- Allison 4500 Transmission
- 20K Front Axle; 46K Rear Ale, 11K Tag Axle

Why Municipal Equipment, Inc?

Municipal Equipment, Inc. is leading the industry with top-quality equipment and dependable support, built on our four pillars of success.

- **Equipment** – Industry-leading solutions tailored to your needs, built for performance and reliability.
- **Parts** – A full inventory of genuine parts to keep your fleet running efficiently.
- **Service** – Expert technicians providing dependable support to extend equipment life.
- **Mobile Service** – Fully equipped units that come to you, minimizing downtime on site.



MUNICIPAL EQUIPMENT, INC.

Call us: 800-248-7590

MunicipalEquipmentInc.com