



MUNICIPAL EQUIPMENT, INC.

# PAC-MAC

## KB-20 GRAPPLE - 18' 24 cy

### FREIGHTLINER M2 106 - VIN WG2311



## EQUIPMENT PROPOSAL

Call us: 800-248-7590

[MunicipalEquipmentInc.com](http://MunicipalEquipmentInc.com)



EQUIPMENT



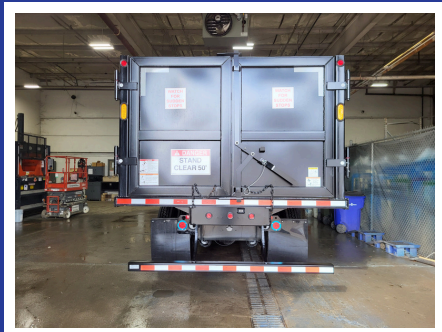
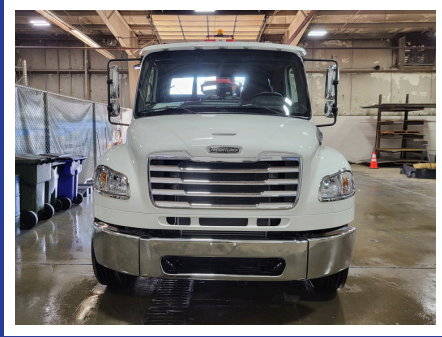
PARTS



MOBILE



SERVICE



- **18' 24 cy Capacity**
- **Barn Doors**
- **Hydraulic Joystick Controls**
- **Oil Cooler**

**Call today to  
schedule a demo  
or secure this  
truck before it's gone!**

# Pac-Mac KB-20 Grapple Freightliner M2106 Chassis

The KB-20 is well-known for its quality, economic efficiency, durability, and user-friendly design. With a variety of options for boom length and body capacity, this series is ideal for all types of loading applications. This unit can be tailored to fit your specific needs.

## Body Specs

- Pac-Mac KB-20 Grapple
- H Style Outriggers with strobes
- 10' Main Boom w/ Extend Tip
- Hydraulic Joystick Controls
- 18' 24 cy Body
- Barn Doors
- Strobe Light on Pivot
- 7" Rear View Camera
- Oil Cooler

## Chassis Specs

- 2026 Freightliner M2 106 - VIN WG2311
- Cummins L9 300 HP Engine
- Allison 3500 RDS Automatic Transmission
- 33,000 GVWR - 12K Front Axle, 21K Rear Axle

## Why Municipal Equipment, Inc?

Municipal Equipment, Inc. is leading the industry with top-quality equipment and dependable support, built on our four pillars of success.

- **Equipment** – Industry-leading solutions tailored to your needs, built for performance and reliability.
- **Parts** – A full inventory of genuine parts to keep your fleet running efficiently.
- **Service** – Expert technicians providing dependable support to extend equipment life.
- **Mobile Service** – Fully equipped units that come to you, minimizing downtime on site.



MUNICIPAL EQUIPMENT, INC.

**Call us: 800-248-7590**

**MunicipalEquipmentInc.com**